



METRO ARTS

NASHVILLE OFFICE OF ARTS + CULTURE

Call to Artists

DONELSON LIBRARY

PUBLIC ART PROJECTS



Donelson Branch Library Call to Artists

CALL SUMMARY

Metro Arts is collaborating with Nashville Public Library and Metro General Services on the creation and installation of two public artworks for the new Donelson Library. The library is to be constructed by the city in 2022-2023 in Donelson Plaza, a 1960s-era strip mall on Old Lebanon Pike in Nashville, TN. This Request for Qualifications (RFQ) includes two separate public art projects. Depending on geographic eligibility, an artist/artist team may apply for one or both projects.

BUDGET

The library's exterior public art project budget is \$250,000 and is a national call open to all U.S. artists. The library's interior public art project budget is \$150,000 and is a local call open to artists in Davidson County, TN, and adjacent counties.

DEADLINE

All submissions of qualifications must be submitted through the [Metro Arts Submittable page](#) by **Wednesday, November 17, 2021 (midnight/11:59 p.m.)**.

PROJECT DESCRIPTIONS

The exterior public art project will result in a permanent public artwork in the .42-acre greenspace located between the library and Old Lebanon Pike. The interior public art project will result in a suspended permanent public artwork in the 2-story open space along the library's north window wall. The selected artist or artists for each project will work closely with Metro Arts staff to design and install these artworks at the new Donelson Library, providing required deliverables according to the project schedule outlined in the contract. The figures represent the total artist budget for each project and include artist's fees for community engagement and design development, overhead and operating costs, fabrication costs, all project-related travel, installation costs, insurance, contingency and any other project-related costs the artist may incur. During the course of the design process, artists for each project will be expected to engage the community in a collaborative spirit with the goal of informing the final design concept.

ARTIST ELIGIBILITY

Submissions will be accepted from professional artists. The artist for the exterior artwork will be selected from a national call with eligible artists residing anywhere in the United States. The interior artwork is a local call and eligible artists may reside in Davidson County or adjacent counties (Cheatham, Robertson, Rutherford, Sumner, Williamson, and Wilson). Local artists may apply for both interior and exterior public art projects. Semi-finalists will be required to show proof of address.

Professional artist – An artist of at least 18 years of age with the following qualifications demonstrated in the submitted artist resume:

1. at least two years of visual art exhibition history, or
2. at least two years of commissioned visual or public art.

Note: Exhibitions, commissions, or public art created during or as part of an artist's undergraduate education shall not count towards these criteria. Architects, landscape architects and other design professionals are not considered professional artists under this definition, unless they meet the criteria.

Artist team

1. Two or more professional artists working collaboratively on a public art project.
2. A collaborative team led by a professional artist. Team may include design professionals or consultants if led by a professional artist.

Artists with conflicts of interest as outlined in the Metropolitan Government of Nashville and Davidson County's Public Art Guidelines are ineligible for public art commissions or projects. Artists may reference section VII of the [Public Art Guidelines](#).

PROJECT GOALS

- Create a site-specific, permanent artwork of a significant scale that will act an iconic landmark within the site.
- Honor the history of Donelson while celebrating the future events and activities planned for the site (such as local farmers markets, seasonal festivals, and special library events).
- Involve the diverse neighboring businesses and residents in the design process.
- Ensure the public artwork has a strong daytime and nighttime presence (particularly the exterior artwork).
- Reflecting Metro Arts' commitment, as outlined in the [Public Art Community Investment Plan](#), to shared civic spaces that are open to everyone and dedicated to the community's vision, identity and purposes.

METRO PUBLIC ART GOALS

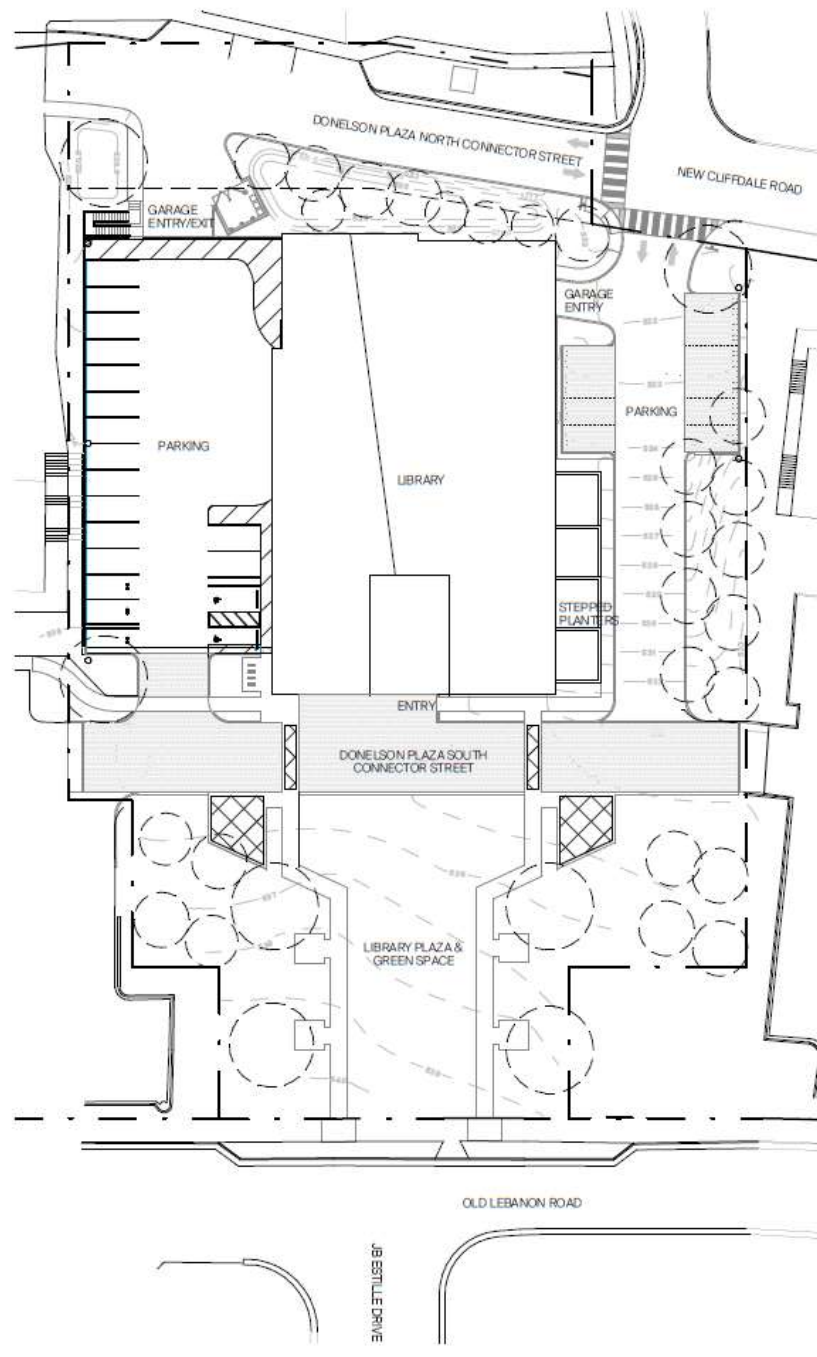
- Create opportunities for deeper cultural and civic participation.
- Drive the support and development of vibrant, creative neighborhoods.
- Strengthen the public art ecosystem in Nashville.
- Prioritize projects in areas that are underserved with public art.
- Commission public art at public facilities particularly parks and outdoor civic spaces; strengthen their role as welcoming and functional places for gathering.

LOCATIONS AND DESCRIPTIONS**Library Location and Description**

Donelson Plaza, site of the new library, is about a mile away from the current library building. The 1960s-era shopping center consists of two sections. The main section of the strip mall is on the west side while the smaller angular section is on the east. Cliffdale Road, which originally bisected the Donelson Plaza's two sections, has been rerouted around the west side to make way for the library site.

The new Donelson Library is a 2-story, 25,000 square foot structure atop a partially below grade garage that anchors the northern end of a 0.42 acre Public Plaza and Green Space. The project's goal is to serve as the "town square" of the Donelson Plaza development and provide a key landmark within the city's Downtown Donelson design strategy. This branch library is pursuing an aggressive Energy Use Intensity target and LEED Gold certification. The project's architectural design is based on 3 conceptual pillars:

- This space is a place of equity and community.
- This form is a homage to context.
- This institution is a steward of education, imagination, and inspiration.



PROJECT 2033
ISSUE DATE 10/14/21

NASHVILLE PUBLIC LIBRARY DONELSON BRANCH

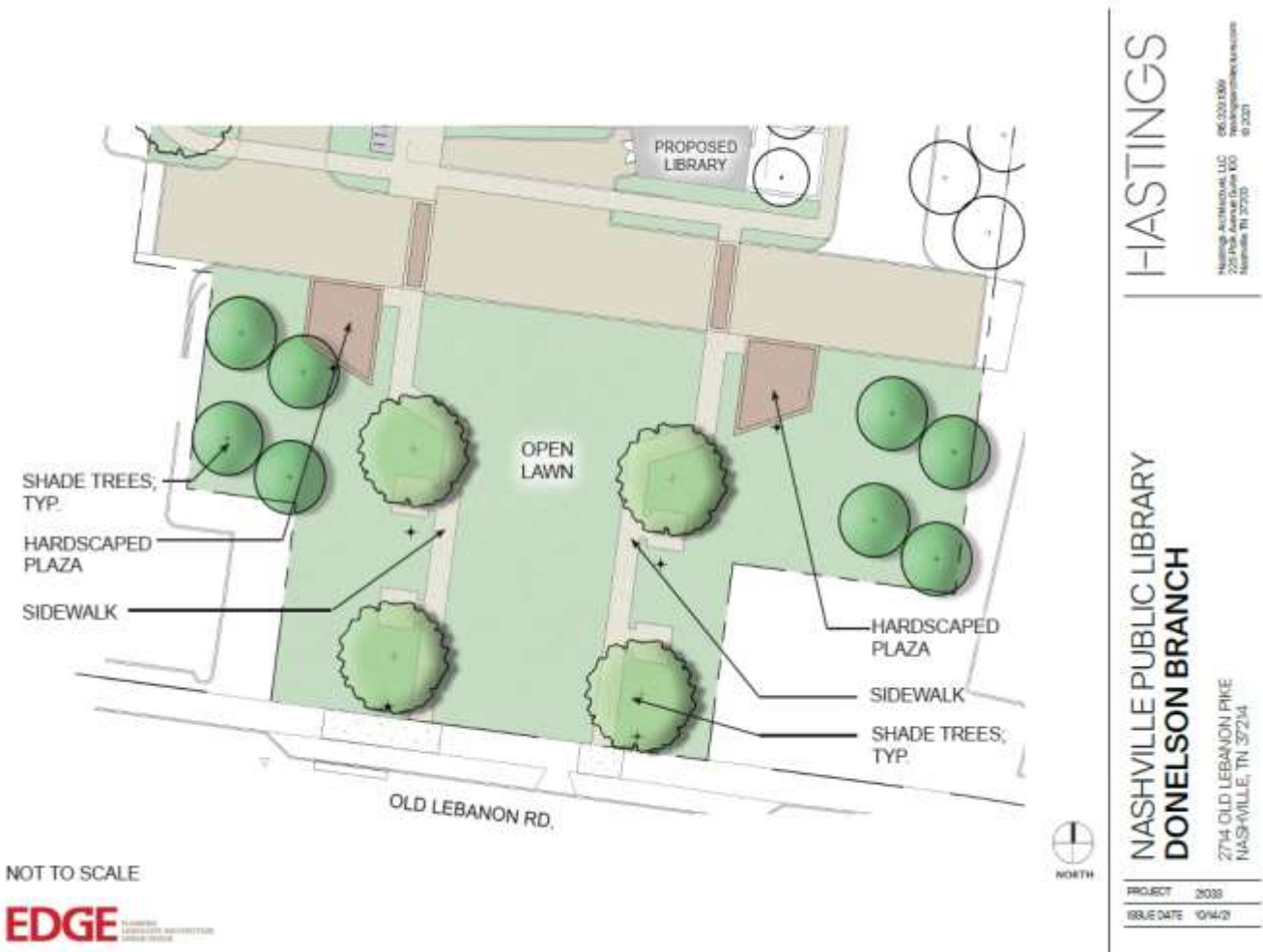
2714 OLD LEBANON PIKE
NASHVILLE, TN 37214

HASTINGS

Hastings Architecture, LLC
225 Polk Avenue Suite 100
Nashville TN 37203
615.329.1399
hastingsarchitecture.com
© 2021

Exterior Artwork Location and Description: The Library Plaza and Green Space

The public open space in front of the Donelson Library will serve as a “town square” for the recently redeveloped Donelson Plaza and the surrounding community. A large open lawn, framed by shade trees, will provide a multipurpose space for community events. Local farmers markets, seasonal festivals, and special library events are some of the activities envisioned for the site. Two accessible sidewalks will frame the space and provide pedestrian access from Old Lebanon Road directly to the library main entrance. Two hardscape plazas will be constructed near the library and will provide a place for pedestrian seating and smaller events.



Interior Artwork Location and Description: The Library’s “Treehouse” space

This interior space is located on the first level of the library but is elevated 14 feet above the ground due to a substantial grade drop. It is a voluminous double-height space with a large north-facing curtainwall overlooking a series of trees and plantings. The space can be viewed from virtually all areas of the first floor as well as viewed from the second floor Children’s Area.

SELECTION PROCESS

Semi-Finalists

The selection panel will conduct an online review of all submissions. Following the initial online review, the selection panel will meet in person (or virtually if required) to review artist submissions and determine a short list of three to five semi-finalists for the interior public art project and three to five semi-finalists for the exterior public art project. It is possible that a local artist may be short-listed for both projects.

Following approval, the semi-finalists will be contacted to schedule an interview. By applying to this call, artists are agreeing to an interview with the selection panel for a date between January 5-14, 2022. All semi-finalists for the exterior public artwork will interview virtually while all semi-finalists for the interior public artwork project will interview in-person at Metro Arts offices. The selection panel will interview semi-finalists and determine a final artist recommendation for each project. It is possible that a local artist may be the finalist for both projects. The selection panel's recommendations will go to Metro Arts' Public Art Committee. If approved, they will be brought to the Metro Arts Commission. Award notifications will be made after approval by the Metro Arts Commission.

Project Timeline

The following projected timetable should be used as a working guide for planning purposes. Metro Arts reserves the right to adjust this timetable as required during the course of this Call to Artists process.

Submissions Deadline	November 17, 2021 at 11:59 pm
Semi-Finalist Selection	November-December 2021
Semi-Finalist Approval by Public Art Committee	December 2021
Semi-Finalist Interviews	January 5-14, 2022
Final Artist Selection and Approval by Public Art Committee and Arts Commission	January 2022
Contract Development	February 2022
Community Engagement	Winter 2022
Design Development	Spring 2022
Fabrication and Installation	Summer-Fall 2022

Application Requirements & Checklist

All Submissions must be submitted via [Submittable](#) and are **due Wednesday, November 17, 2021 by 11:59 PM (Central Time)**. In order to be considered, artists are required to submit the following materials:

1. **Artwork Images:** Six (6-9) digital images representative of your artwork are required*. (File types accepted: JPG, PNG, GIF, TIFF). *Artists will be selected based on their portfolio of works. Artists are required to include basic specifications of each image (title, media, dimensions, year and retail price).
2. **Current Artist Résumé:** not to exceed four single-sided pages or 2MB. Resume must demonstrate artistic practice as defined by the Artist Eligibility guidelines above.
3. **Completed Submittable Application Form** (including the short answer questions)
4. **References:** Two creative references (those who can speak to your work and your experience as an artist)

Full submission instructions are available at [Submittable](#). Please read through carefully before submitting. Incomplete submissions will not be reviewed. No submissions will be accepted after the deadline. Technical questions about the online submission process (i.e. image upload, Submittable account set-up, etc.) should be directed to <http://help.submittable.com/>.

Selection Criteria

Artists will be selected based on the following criteria:

- artistic merit of previous work samples;
- artist's ability to engage with, connect to and understand the community for which public artwork is intended;
- a deep understanding of public art planning, design, construction and community engagement processes;
- evidence of experience successfully working in a collaborative spirit on large-scale public projects;
- evidence of ability to be accountable to project partners, schedules and budgets.

Application Narrative Questions (Short Answer)

Please respond to each of the following narrative questions (250 words max):

1. How would you describe your artistic practice? What is your creative process?
2. Why is this project of interest to you? What factors do you consider in developing a project like this?
3. What role does public art play in adding to community pride and identity?
4. Please explain how you would involve community participation and input into the design, implementation, and/or actualization of the work. Be specific.

Conflicts of Interest

Employees of the Metro Nashville Arts Commission or the Metro Nashville Government are ineligible to apply. Family and household members of Metro Arts employees are also ineligible. Members of the Metro Nashville Arts Commission or Public Art Committee are ineligible for public art commissions or projects.

Resources for Questions

Direct all questions related to this Call to Artists to: arts@nashville.gov with Donelson Library Call to Artists in the subject line. **Questions will be taken through close of business on Friday, November 12, 2021.**

APPENDIX

Metro Public Art

The Metropolitan Nashville Arts Commission (Metro Arts) is a department of the Metro Government of Nashville and Davidson County established in 1978 for the purpose of promoting, preserving, and expanding the cultural and artistic interests of the general public. Metro Arts believes ALL Nashvillians should be able to participate in a creative life; and that the arts drive a vibrant and equitable community. The Metro Arts public art program was established in June 2000 with the passage of a public art ordinance. The ordinance dedicates one percent (1%) of the net proceeds of general obligation bonds issued for construction projects to fund public art. Metro Arts established [Public Art Guidelines](#) and named a Public Art Committee (PAC) as a standing committee to oversee the public art program.

History/Background of Donelson

Donelson is a rapidly growing suburban neighborhood located about 6 miles east of downtown Nashville along US Route 70. It is bordered and crossed by both natural and manmade landscape features, the Cumberland and Stones Rivers, Percy Priest Lake, Interstate 40, and Nashville's commuter rail, the Music City Star.

The community was named in honor of John Donelson, co-founder of Nashville. Once a primarily agricultural area, there are several antebellum homes that remain and are open to the public, such as Buchanan Log House (1807) and Cloverbottom Mansion (1858). Two Rivers Mansion (1859) was once the center of a livestock and dairy farm and is now a special event space and golf course owned by Metro Government.

Donelson experienced tremendous residential growth starting with Bluefields, a subdivision created in the 1930s. Many other subdivisions followed featuring the red brick, detached ranch-style homes so characteristic of postwar suburban housing. This residential development was paralleled by other large infrastructure projects, most notably the establishment of Berry Field, now the Nashville International Airport, in 1937 and the creation of Percy Priest Lake, a recreational center on the Stones River, in the late 1960s.

The area is the home to several iconic entertainment and hospitality venues. Opryland USA (1972-1997) was a beloved theme park that attracted 2.5 million annually. This property is now the Opry Mills shopping center, opened in 2000. It is adjacent to the Grand Ole Opry House, opened in 1974, and the Opryland Hotel complex which began in 1977 and has evolved into one of the largest hotels and convention centers in the United States.

Hundreds of small and medium-sized local businesses serve the bustling community. With neighboring Hermitage, local business leaders established the Donelson-Hermitage Chamber of Commerce in 1977 to promote economic development. Leadership Donelson-Hermitage, now known as L'Evate, supports business and community leaders in learning, interacting and engaging with the community. HIP Donelson was created in 2009 for community development, enrichment, safety, and education. The group holds a large farmers market from May to October, finds/re-unites over 3,000 neighborhood pets, and hosts a vigilant Neighborhood Watch program.

History/Background of Donelson Plaza

As countless families relocated to newly constructed subdivisions in the years following World War II, Donelson transitioned from a rural to a suburban community. In 1958, construction began on a new shopping center, the Donelson Plaza, a "strip mall" that catered to this new automobile-oriented demographic. Since its opening in 1961, the shopping center has provided essential services and convenient shopping in one convenient location, amenities traditionally provided downtown.

Sixty years later, Donelson is experiencing renewed vitality and reinvestment associated with the new development and incredible growth seen all over Davidson County. The revitalization of Donelson Plaza has begun on Old Lebanon Road that will create a modern urban "town center" atmosphere and a state-of-the-art public library as its civic anchor. Holladay Properties began the revitalization of Donelson Plaza in 2018 which will include refurbished building facades and courtyards; redesigned landscapes, sidewalks and roadways; and future mixed-use buildings flanking the entrance to the new library. Metro General Services, working closely with Nashville Public Library, is managing the library capital construction project expected to be completed in 2023.